



## Curriculum Intent: Geography

We aim to foster an attitude of exploration and curiosity to explore the world around us. By developing a sense of place, locational knowledge and environmental issues, pupils will be able to participate in reasoned debates, ask pertinent questions and describe our environment using precise geographical vocabulary, making links to science and cultural identify. A strong understanding of our world will lead to the empowerment of individuals to make active choices in our future.



## Local and Global relevance

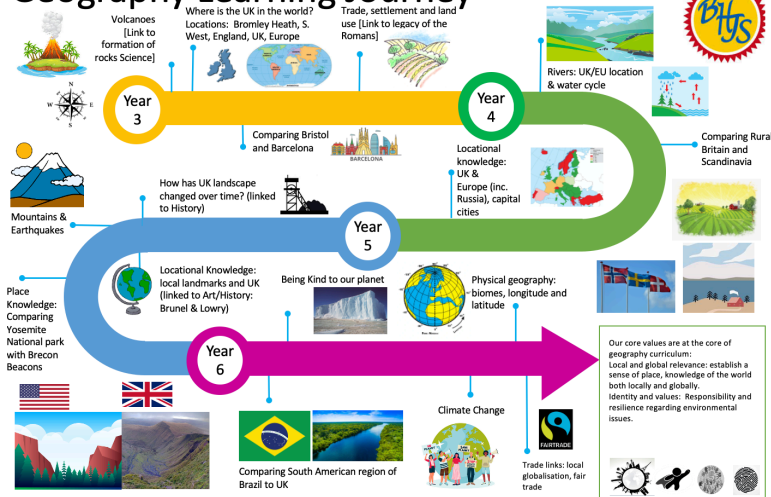
By exploring a range of significant local and global localities, we aim for pupils to describe key geographical features, and the how humans use and care for the world environment. This informs pupils as citizens to engage with issues facing society today such as climate change and deforestation.



## Confidence and resilience

We aim to equip pupils a wide range of critical skills and knowledge to consider how localities change over time to significant through detailed studies of globally significant places. Pupils will develop confidence to ask and explore their own questions to explore and enjoy the awe and wonder of our world.

## Geography Learning Journey



## Inclusivity and Diversity

Through exploring different cultures and localities, pupils can make links to their work in history and PSHE. We aim to develop mutual respect for other nations and societies as well as an understanding of the growing interdependence of countries.



## Identity and values

Through exploration about where people live, the landscapes and how they use land, pupils will reflect on who they are as citizens and to make sense of the world around them. This informs the values behind living a sustainable life that respects the environment and has a positive impact upon it.